

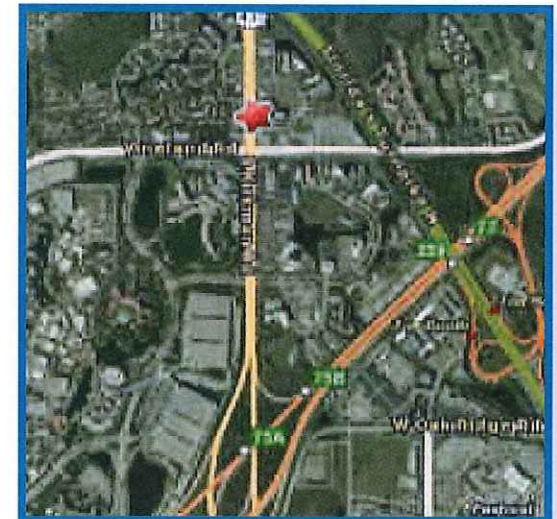
# *Universal Plaza*



## **Highlights**

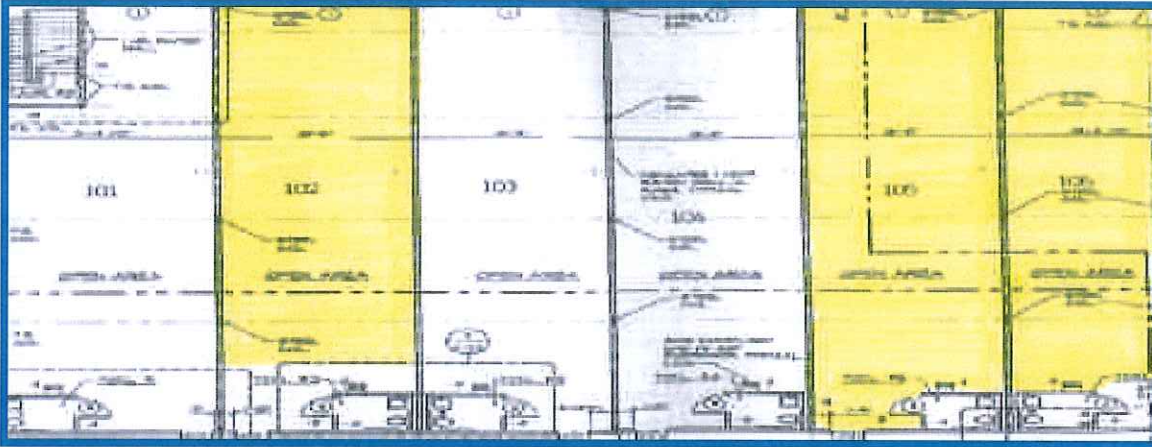
- High Traffic Corridor Fronting Kirkman Road
- Across Universal Studios Theme Park
- HH Income in 3 Miles Radius \$54k
- High Walk Traffic Density & Tourist Corridor
- Conveniently Located to Turnpike & Interstate 4
- High Visibility Traffic Count 57,000 Vehicles per day
- Great National Tenant Mix

## **Site Map**



5389 South Kirkman Road Orlando, FL 32819  
(Across Universal Studios)

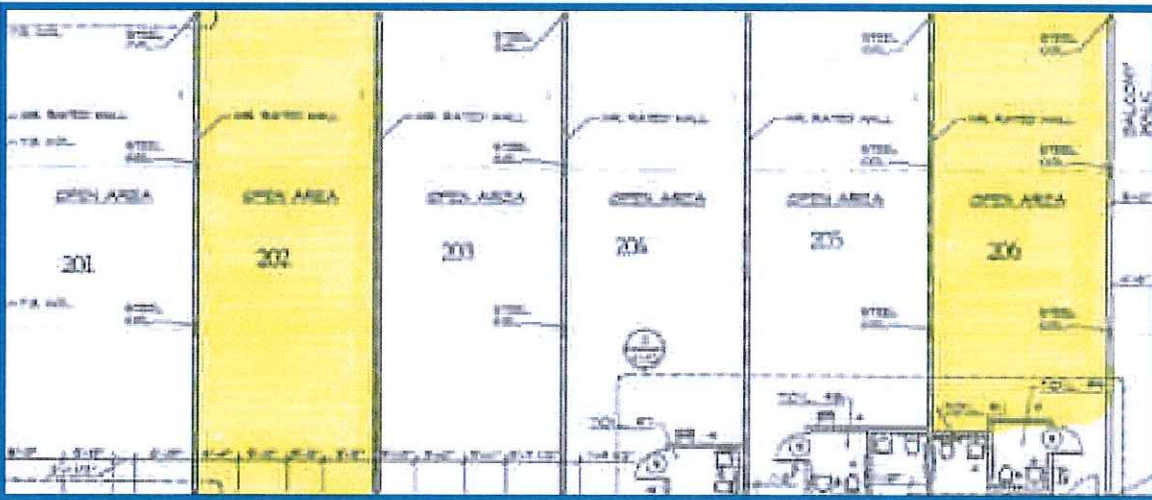
## First Floor Layout



### **First Floor Availability**

- Suite 102 - 1284 sq. ft.
- Suite 105 - 1284 sq. ft.
- Suite 106 - 1255 sq. ft.

## Second Floor Layout



### **Second Floor Availability**

- Suite 202 - 1284 sq. ft.
- Suite 206 - 1255 sq. ft.