

IMAGINE YOURSELF IN ONE OF OUR SPACES...

Shoppes of Portofino

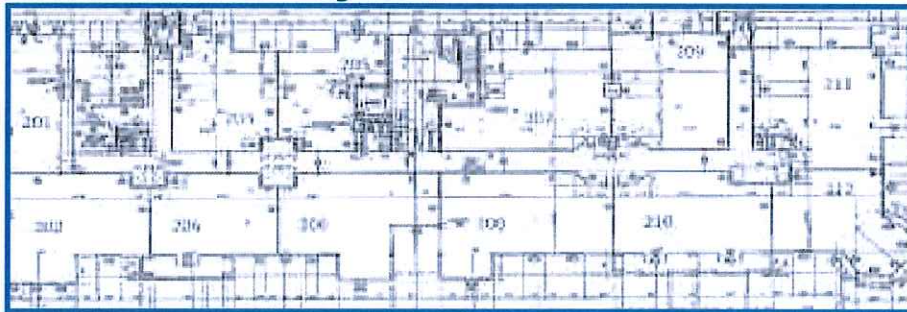
5787 Vineland Road Orlando, FL 32819
(Across Universal Studios)



First Floor Layout



Second Floor Layout



Highlights

- High Traffic Corridor on Kirkman Road
- Across Universal Studios Theme Park Employee Entrance
- HH Income in 3 Miles Radius \$68k
- High Walk Traffic Density & Tourist Corridor
- Conveniently Located to Turnpike & Interstate 4
- High Visibility Traffic Count 57,000 Vehicles per day

Retail Ground Availability

- Suites Available from 1200 sq. ft. to 13,000

Office Second Floor Availability

- Suites Available from 791 sq. ft. to 13,000

Site Map

